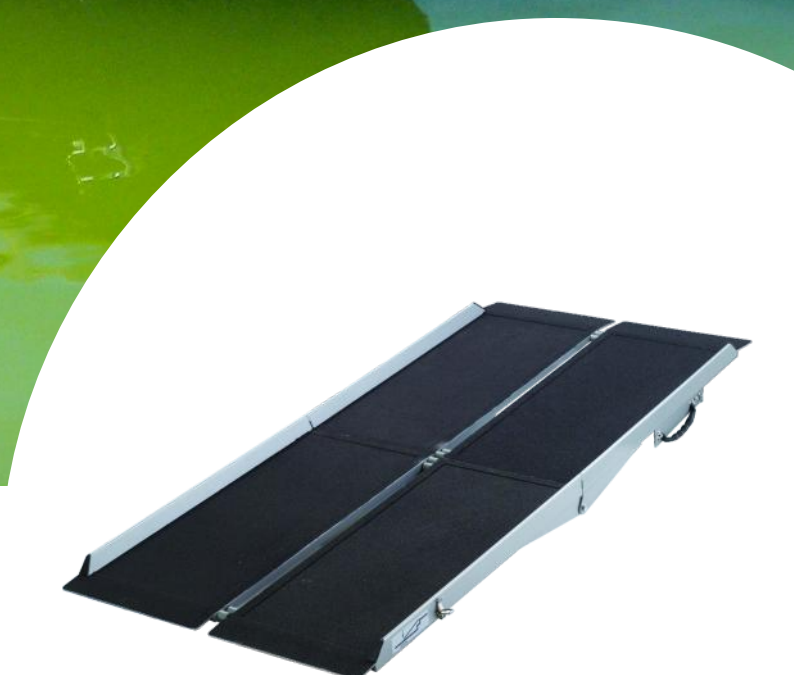
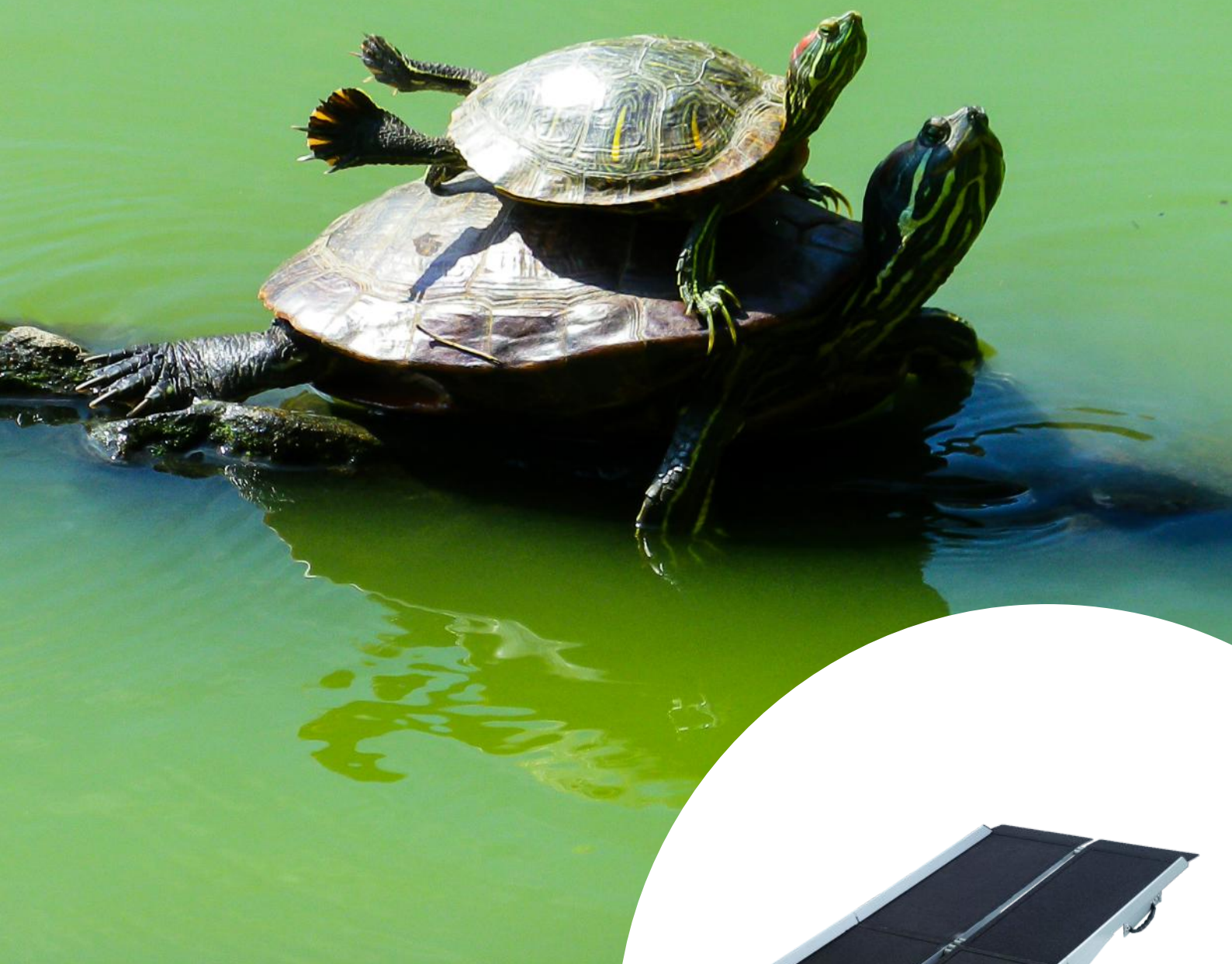




REHASENSE



BROADBAND

ALUMINIUM RAMPS

Our **BROADBAND** ramps are manufactured using aluminium honeycomb panels with anti-slip tape on the top for maximum safety. The honeycomb core ensures low weight yet high strength and durability.

The ramps folding design makes it convenient for storage and portability. The ramps are available in many sizes, in both platform and channel designs.

more than mobility

BROADBAND Beam

FOLDABLE ALUMINIUM RAMP

FEATURES

- Aluminium ramp with anti-slip surface



Foldable handle



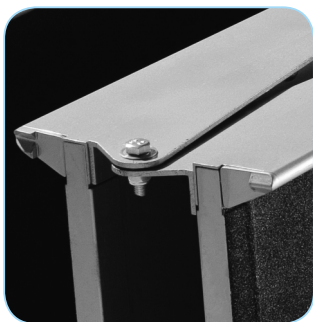
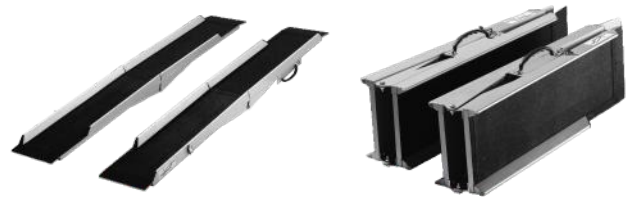
Transportation lock

BROADBAND Ray

TWO SINGLE FOLDABLE ALUMINIUM RAMPS

FEATURES

- Aluminium ramp with anti-slip surface



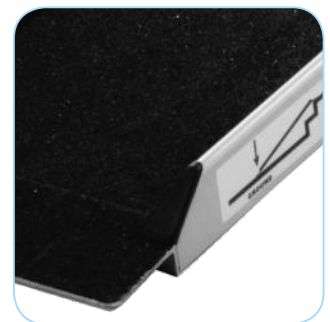
Foldable with 2 hinges



Foldable handle



Transportation lock



High and safe side edges

BROADBAND Spectrum

FOLDABLE ALUMINIUM RAMP

FEATURES

- Aluminium ramp with anti-slip surface



Foldable handle



Transportation lock



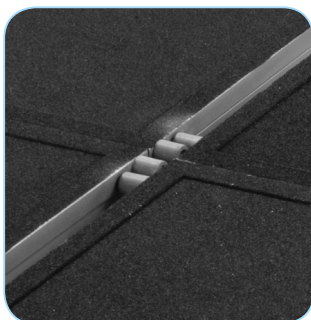
High and safe side walls

BROADBAND Defrag

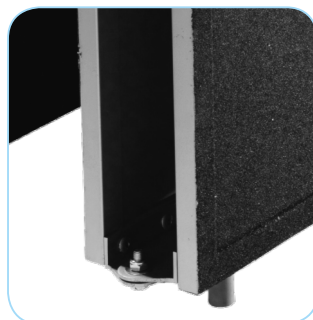
FOLDABLE TWO-PIECE ALUMINIUM RAMP

FEATURES

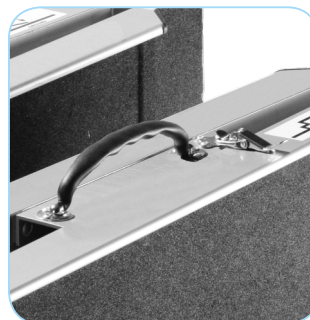
- Aluminium ramp with anti-slip surface
- Safety lock keep the ramps together when the ramp is in use.
- Spacers have the function of legs when the ramp is folded. They also help keeping the ramps in place when the ramp is in use.



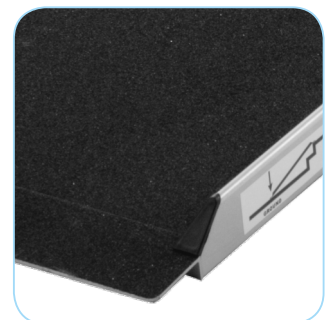
Safety lock



Spacers have the function of legs when the ramp is folded



Foldable handle and transportation lock



High and safe side walls

BROADBAND Connect

FOLDABLE ALUMINIUM RAMP



REHASENSE

FEATURES

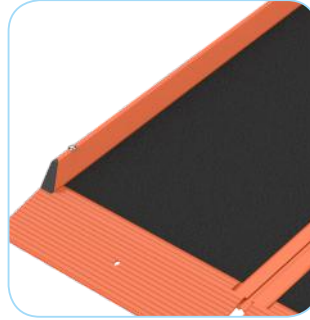
- Aluminium ramp with anti-slip surface



Flexible handle straps



Transportation lock



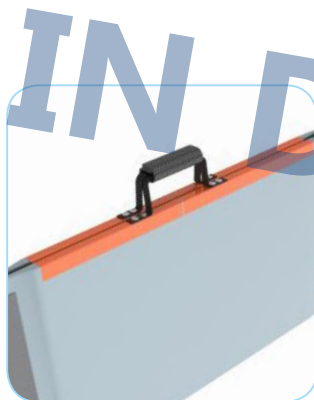
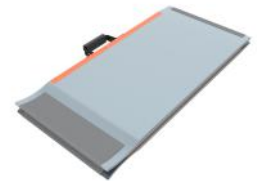
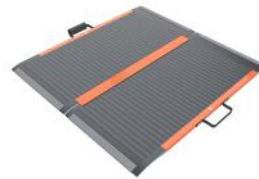
Safe side walls with bright colour attention

BROADBAND Carbon Lite & Carbon Lite EBL

ULTRA-LIGHT FOLDING ACCESS RAMPS

FEATURES

- Non-skid surface with Hi-Vis orange safety lines.
- Made from Pure Carbon Fiber
- Bi-fold, lengthwise with closure strap and dome



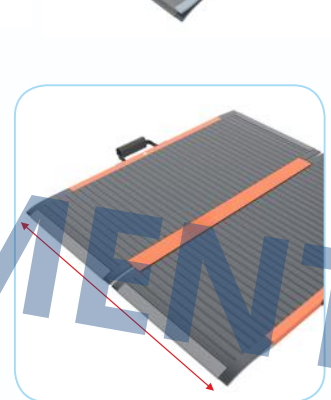
Comfortable carry handle



Non-skid surface with orange safety lines



Max. Height for Step: 16 cm



Inner Track Width: 79 cm

BROADBAND Beam

| Name | Length (cm) | Track width (cm) | Max height for step (cm) | Weight (kg) | Max load (kg) | Part no. |
|--------------------|-------------|------------------|--------------------------|-------------|---------------|-----------|
| BROADBAND Beam 450 | 45 | 71 | 9 | 4.1 | 300 | BB1P04571 |

BROADBAND Ray

| Name | Length (cm) | Track width (cm) | Max height for step (cm) | Weight (kg) | Max load/pair (kg) | Part no. Set of 2 ramps |
|--------------------|-------------|------------------|--------------------------|-------------|--------------------|-------------------------|
| BROADBAND Ray 1500 | 150 | 2 x 25 | 30 | 2 x 5.0 | 2 x 200 | BB2P15025 |
| BROADBAND Ray 1800 | 180 | 2 x 25 | 36 | 2 x 5.7 | 2 x 200 | BB2P18025 |
| BROADBAND Ray 2100 | 210 | 2 x 25 | 42 | 2 x 6.8 | 2 x 200 | BB2P21025 |

BROADBAND Spectrum

| Name | Length (cm) | Track width (cm) | Max height for step (cm) | Weight (kg) | Max load (kg) | Part no. |
|-------------------------|-------------|------------------|--------------------------|-------------|---------------|-----------|
| BROADBAND Spectrum 700 | 70 | 76 | 14 | 6.3 | 300 | BB1P07076 |
| BROADBAND Spectrum 900 | 90 | 76 | 18 | 7.6 | 300 | BB1P09076 |
| BROADBAND Spectrum 1200 | 120 | 76 | 24 | 9.5 | 300 | BB1P12076 |
| BROADBAND Spectrum 1500 | 150 | 76 | 30 | 11.5 | 300 | BB1P15076 |

BROADBAND Defrag

| Name | Length (cm) | Track width (cm) | Max height for step (cm) | Weight (kg) | Max load/pair (kg) | Part no. Set of 2 ramps |
|-----------------------|-------------|------------------|--------------------------|-------------|--------------------|-------------------------|
| BROADBAND Defrag 1800 | 180 | 76 | 36 | 2 x 7.1 | 2 x 150 | BB2P18038 |
| BROADBAND Defrag 2400 | 240 | 76 | 48 | 2 x 10.6 | 2 x 150 | BB2P24038 |
| BROADBAND Defrag 3000 | 300 | 76 | 60 | 2 x 12.4 | 2 x 150 | BB2P30038 |

BROADBAND Connect

| Name | Length (cm) | Track width (cm) | Max height for step (cm) | Weight (kg) | Max load (kg) | Part no. |
|-------------------|-------------|------------------|--------------------------|-------------|---------------|------------|
| BROADBAND Connect | 152 | 80 | 30 | 10.8 | 400 | RAM656800R |

BROADBAND Carbon Lite & Carbon Lite EBL

| Name | Dimensions opened length x width (cm) | Dimensions folded length x width (cm) | Max height for step (cm) | Weight (kg) | Max load (kg) | Part no. |
|------------------------------|---------------------------------------|---------------------------------------|--------------------------|-------------|---------------|------------|
| BROADBAND Carbon Lite 8 | 82 x 78 | 82 x 39 | 16 | 3.0 | 350 | BCF1P820 |
| BROADBAND Carbon Lite EBL 82 | 82 x 78 | 82 x 39 | 16 | 3.3 | 350 | BCFEB1P820 |
| BROADBAND Carbon Lite 125 | 125 x 78.6 | 125 x 40 | 25 | 4.5 | 350 | BCF1P1250 |
| BROADBAND Carbon Lite 165 | 165 x 78.6 | 165 x 40 | 33 | 6.5 | 350 | BCF1P1650 |