

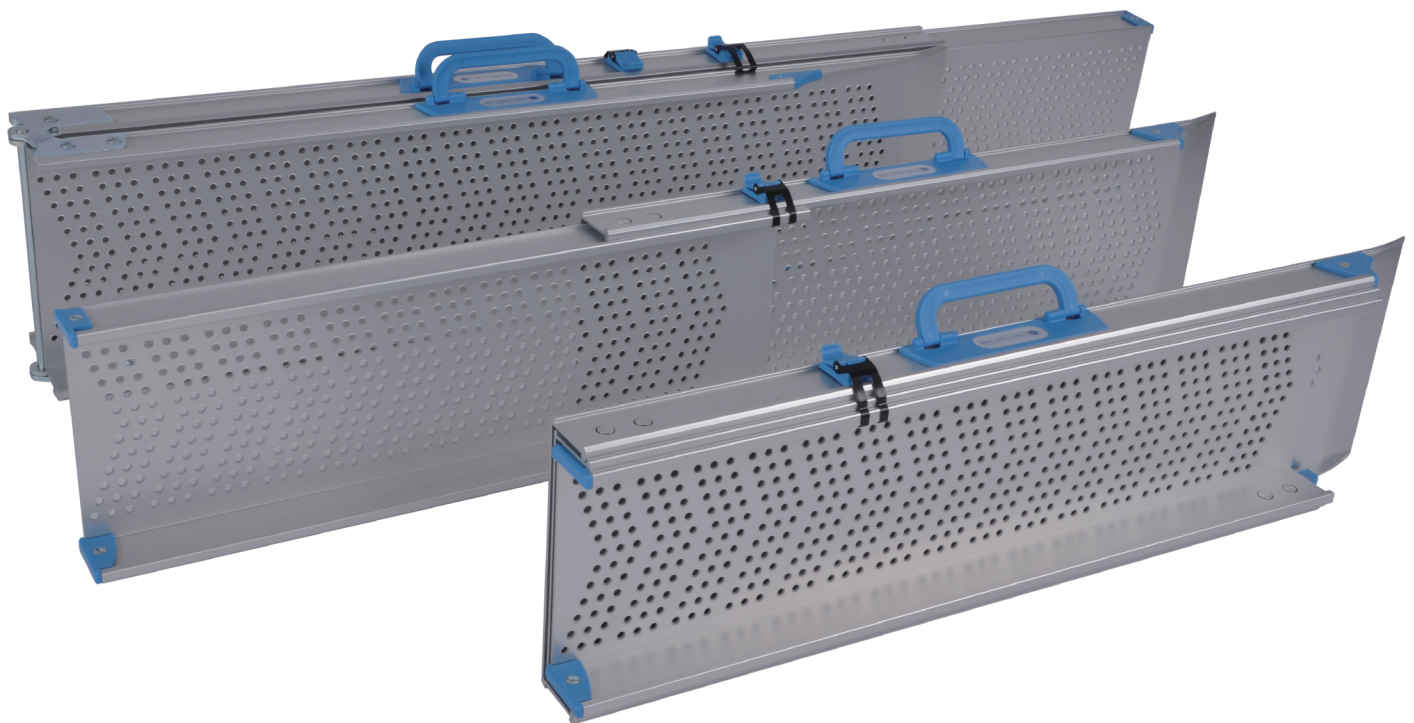
PONDUS

aluminium ramps

Pondus high strength aluminium ramps.

A new channel ramp series available in foldable and telescopic versions or as a combination of both. The design and material choices makes it a very strong heavy use series of ramps, ready to support in a safe way.

Telescopic ramps are equipped with plastic sliding bearings to ensure smooth operation.



www.rehasense.com

Rehasense Europe

Sulejowska 45, 97-300 Piotrków Trybunalski, Poland

info@rehasense.com

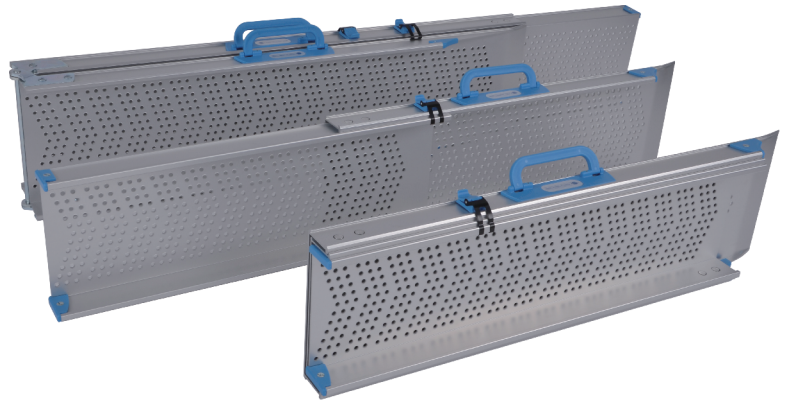
Copyright Rehasense © 2015



REHASENSE

PONDUS

aluminium ramps



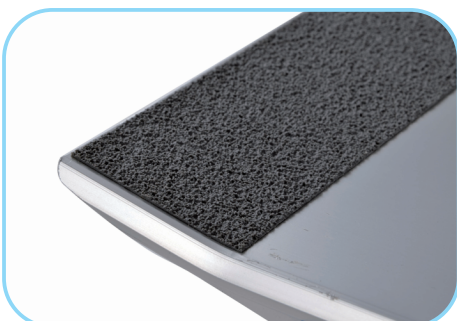
Transportation lock



Ergonomic lifting handles



Plastic sliding bearings to ensure smooth operation.



Pondus friction

Type	Item no.	Description	Max length (mm)	Net weight/pair (kg)	Max height for step (cm)	Track width (cm)	Max load step (kg)
1100 F2	PF201100	Foldable with 2 parts	1100	7.1	22	21	2 x 200
1500 F2	PF201500	Foldable with 2 parts	1500	9.2	30	21	2 x 200
2000 F2	PF202000	Foldable with 2 parts	2000	11.7	40	21	2 x 150
2800 FT3	PFT32770	Foldable & Telescopic with 3 parts	2770	16.6	60	19.5	2 x 125
1200 S	PS001170	Single part	1170	5.8	23	21	2 x 200
550 S	PS000550	Single part	550	2.9	11	21	2 x 200
2900 T3	PT302890	Telescopic with 3 parts	2890	16.2	58	18	2 x 125
2000 T3	PT301990	Telescopic with 3 parts	1990	12	40	18	2 x 150
2000 T2	PT202030	Telescopic with 2 parts	2030	11.3	40	19.5	2 x 150
1200 T2	PT201190	Telescopic with 2 parts	1190	7.3	24	19.5	2 x 175



Pondus is **CE** - marked and fulfills the requirements of EU directive 93/42 EEC for medical devices

